

## SHALOM CHRISTIAN COLLEGE 2009 ANNUAL REPORT

### SHALOM CHRISTIAN COLLEGE – A SNAPSHOT

---

Shalom Christian College is a co-educational school founded in 1992. Shalom Christian College offers a Christian education with a cultural inclusive curriculum designed to cater for Aboriginal and Torres Strait Islander students from Prep to Year 12. Shalom offers on campus boarding facilities for secondary students, and has boarders who come from mainly Queensland and the Northern Territory.

Shalom Christian College operates across two beautiful campuses, one located on Harvey's Range Road only a short distance from facilities such as the Willows Shopping Town, the Riverway and the Dairy Farmers Stadium offering boarders a wealth of supervised activities.

The second campus is located 65km north of Townsville in a serene rainforest area of Crystal Creek offering an excellent environment for students who have become disengaged from education, with programs focused on developing literacy and numeracy skills.

**School Sector;** Independent

**Total Enrolments;** 370

**Year Levels Offered;** Prep – 12

**Offering;** Co-educational

**School's Address;** 190 Harvey's Range Rd, Condon, Queensland, 4815

## **DISTINCTIVE CURRICULUM OFFERINGS**

---

### **Shalom Academy of Sport;**

The Shalom academy of sports has had a massive second year of operation with a marked increases in the variety of sports participated in and the number of students that made representative teams. In 2008, Shalom had the following teams compete in the Townsville Secondary Schools Sports (TSSS) competitions this year:

- Open and Under 15 boys NRL
- Open and under 15 boys Touch
- U/16 boys AFL
- Open boys basketball
- Open and under 15 girls basketball
- Open and under 15 girls touch
- Open girls netball

Some of the highlights of the TSSS campaign was winning the C grade, U/15 girls basketball and being runners up in both the B grade open boys basketball and u/15 boys rugby league. Shalom teams also competed in various stand alone tournaments and events including:

- Open and u/15 girls AFL carnival in which Shalom finished second place in both grades,
- U/15 girls ARL carnival,
- North QLD Indigenous AFL Cup (open boys),
- North QLD Indigenous Rugby League Match (open boys in Cairns).

Shalom also fielded U/15 and U/17 AFL teams in the local Townsville competition. Shalom students also for the first time competed in the weekly open touch competitions held at JCU, students particularly enjoyed playing against the older opponents and enjoyed mixing with other members of the wider community.

The annual Shalom Cup NRL tournament was in its second year this year, and was run in a 7's format with both an under 15 and under 17 division, as apposed to only 17's in the previous year. A grand total of 16 teams competed across both divisions with Bala's United reining as undefeated champions of the 17s division and Djarragun College taking the cup for the U/15 division. Teams traveled from Townsville, Cairns, Palm Island and the Charters Towers area to compete at Townsville Brothers Rugby League fields.

On top of all the specialized sporting programs Shalom also held the usual sporting events throughout the term, with students having a great time at both the Athletics and Swimming Carnivals. This year saw Green House take out the Swimming Carnival with the following students being crowned age champions;

- 13yrs Rosina Anau, Lenny Yorens,
- 14yrs Zhane Saylor, Bevin Chong,
- 15 yrs, Noelan Rosser,
- 16 yrs Brenda Richardson and Peter Nai,
- Open Jordan Solomon and Talika Greenaway/Keera Huddleston.

The Athletics Carnival was taken out by Blue House. The age champions were as follows;

- 13yrs Clorene Parkinson,
- 14 yrs Elora Richardson, Jordan Solomon,
- 15 yrs Damien Short and Margaret Lippo,
- 16 yrs Ossie Mimi, Brenda Richardson,
- Open Janson Ngalmi, Kahli Kiwat.

From the Athletics carnival 40 Shalom students were picked to compete at the TSSS trials which was a major increase from 2007. As a school we improved our total points by over 200% from the previous year.

The Shalom Academy of Sports (SAS) students have been very successful this year with several of the SAS athletes chosen for representative teams;

- Shaun Wauchope made the Townsville Brolga's representative touring team and toured Japan over the Easter break. Shaun also made the Townsville Open School boys rugby team and the North QLD open school boy's rugby team.
- Mitchel Taylor, Josiah Burrawanga and Corey Rarraianaiwuy all made the Townsville Eagles U/18 AFL team.
- Ewan Deeral, William Huddleston, Noelen Rosser, Jerome Nundrihbala and Damien Short were selected in the Townsville Eagles U/16 AFL side
- Yowane Namabai and Shane Cedric were selected to play for the U/14 Townsville Eagles and U/14 Cape York Crusaders teams respectively.
- Noelan Rosser, Brendon Burrawanga, Daniel Wanambe, Shane Cedric, Jaydron Nundrihbala, Yowane Namabai, William Huddleston and Jordan Garrawurra were all selected in the inaugural Townsville U15 AFL school boys team
- Brendon, Daniel, Noelan, Jaydron, and William also selected in the North QLD U/15 AFL schoolboys team.
- Daniel Wanambe was also then selected in the QLD Country U/15 AFL team.
- Kahli Kiwat, Loretta Anau, Eileen Pablo, Tinisha Solomon, Faith Rogers and Kaylene Hogan were all selected in the U/16 girls AFL side.
- Mitchell Taylor and Kahli Kiwat both made the Townsville All Schools team with Mitchell winning the Open Boys high jump at the North QLD titles.

With such representative success this year it is evident that the SAS is successfully supporting students towards better levels of health, fitness and higher representative honors. The SAS staff increased this year with Teacher Aide Belinda Taylor and HPE teacher Toni Gray joining Mr. Christensen in the SAS students. The Sports Academy saw a massive increase in participation and helped support a record number of students reach higher endeavors with their sports.

Sports Academy students came out of normal classes between two and three times a week for expert sports specific training, including weights and fitness training. Expert training was offered in the areas of AFL and Rowing this year.

Shalom Academy of Sports students worked towards their own personal goals, being rewarded with an embroidered shirt and hat this year. This was given to students who achieved high class attendance and had a positive attitude towards training and playing sport. The positive changes in these students life skills was evident throughout the year and definitely highlighted the importance of the SAS Program in developing positive behavior, increased effort and commitment from the students involved. The program also allowed SAS staff to foster a good relationship with the students allowing staff members to assist in managing student's behavior, preventing a number of incidents between students from escalating into much bigger situations.

This year a number of SAS students were working on Sport and Recreation traineeships through the PASS Australia organization. These students were Zhane Saylor, Emma Joseph, Noelan Rosser, Jock Ngalmi, Kathyleen Hames, Maree Hames, Steven Kenyon, Tanya White, Marisha Gibbs and Bernard Sellars. These students all successfully obtained their first-aid certificates and worked a number of days at Weir

state school teaching primary students the benefits of physical activity through games. These students will continue on with their traineeship in 2009.

**Accelerated Numeracy**

In 2007, Shalom and Deadly Math’s – a program aimed at boosting Indigenous math’s performance, formed a partnership. This resulted in the development of a mathematics program, entitled *Accelerated Mathematics*,

1. Educationally-significant improvement was made in Years 3-4 and 4-5, with students gaining up to 1.5 years (3 times acceleration) for most items and most students ending at the level expected for their Year (see Figure 1).

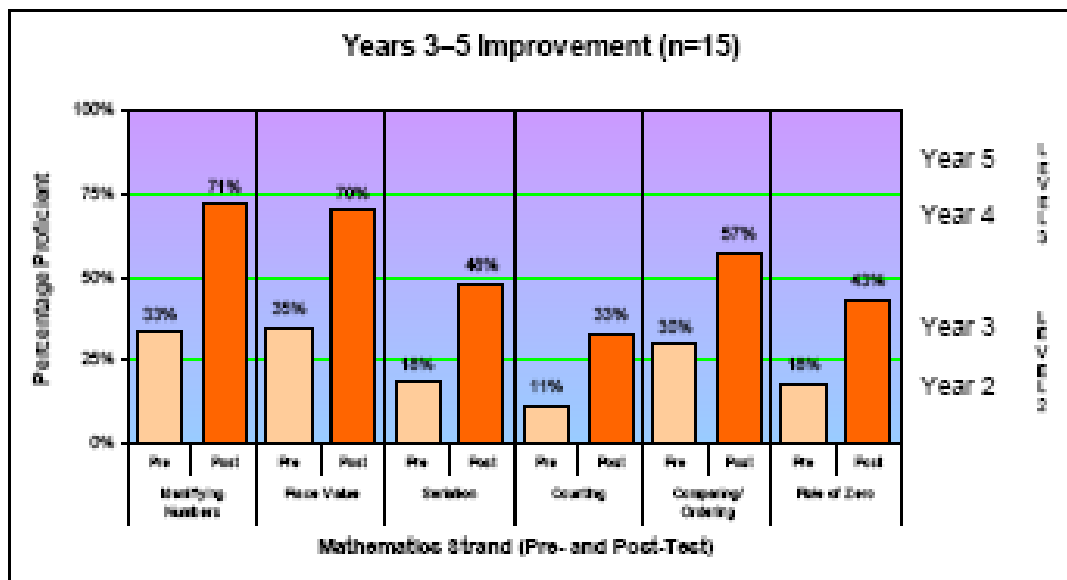


Figure 1. Improvement in Years 3-5

2. Less improvement was made in Years 5-6 and 7, with students only making gains greater than the time they spent learning in some items and making losses in others (see Figure 2).

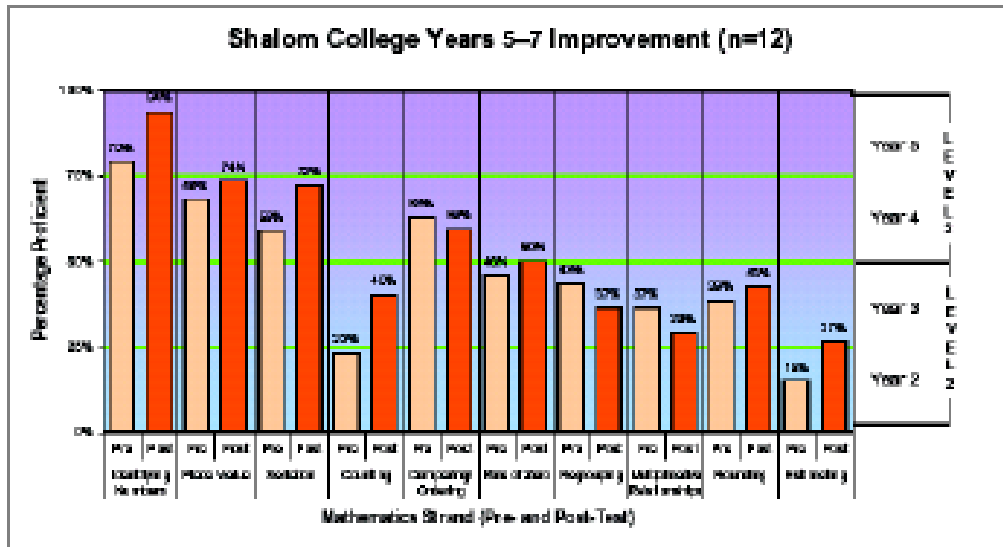


Figure 2. Improvement in Years 5–7

3. Educationally-significant improvement from a low starting point was made in Years 8–9 and 10, with students gaining up to 2 years for most items (4 times acceleration). This improvement was sustained from whole-number numeration into fraction understandings (see Figure 3).

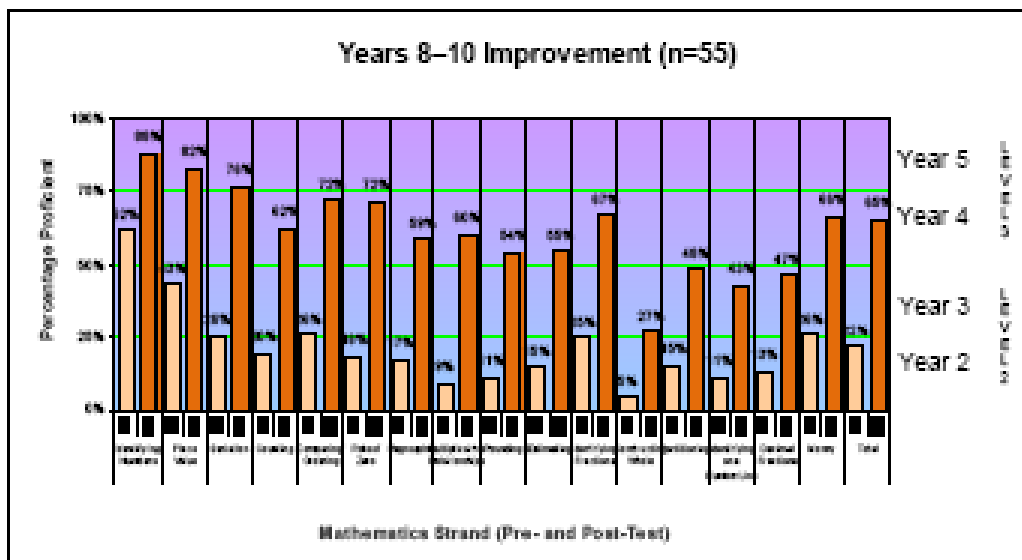


Figure 3. Improvement in Years 8–10

**National Accelerated Literacy**

Funding under *Schedule 18 – Indigenous Education Project – Non-Capital* has ensured the continuation of the Accelerated Literacy Program at Shalom Christian

College during 2008/2009. Accelerated Literacy has become firmly embedded into the educational thinking and practice of teachers of literacy at Shalom.

In 2008 the Accelerated Literacy Program includes students in Pre-school to Year 10 and Secondary students situated at the Crystal Creek Campus. Performance indicators at each bench mark showed;

Year 3

- 10 Year 3 students have been involved in the Accelerated Literacy Program during Semester 1 of 2008.
- All 10 Year 3 students participated in the National Literacy Benchmark Testing.

Year 5

- 14 Year 5 students have been involved in the Accelerated Literacy Program during Semester 1 of 2008
- 11 Year 5 students participated in the National Literacy Benchmark Testing. The other 3 students did not attend Shalom at the time of the test.

Year 7

- 14 Year 7 students have been involved in the Accelerated Literacy Program during Semester 1 of 2008
- 10 Year 7 students participated in the National Literacy Benchmark Testing. The other four students did not attend Shalom at the time of the test.

### **How computers are used to assist learning**

---

Shalom Christian College strongly values the use of technology in education and has spent 2008 developing its computer facilities to offer students a more interactive and exciting learning experience. In 2008 Shalom conducted extensive professional development session in order to ensure that teachers adopt and implement the new technologies in their classes. Shalom now has 12 fully operational Interactive White boards across the school, with one in the Library that can be utilized by all teachers.

### **Christian Perspectives**

Christian Perspectives is a Biblical education program delivered to all students from P - 12. Christian Perspectives allows for an appreciation of the student's culture to be viewed within a biblical context and within the context of living in a multicultural society. Christian Perspectives will encourage students to explore their personal values and life choices, and the ways in which Christian faith can inform those values and choices. It will help students to understand the personal, relational and spiritual dimensions of human experience.

The Christian Perspectives course in the Senior School builds on the learning gained in previous years. Encouraging Christian students to deepen their knowledge and understanding of their faith, and offering the Christian faith to other students for their informed decision-making about their own spirituality.

### **Young Men's and Young Women's Groups**

Young Men's and Young Women's Groups are available to students on a weekly basis and each workshop lasts an hour. Students can self refer to the groups or are referred by their family/carer or staff members.

These groups focus on strengthening core skills to help young people develop personal skills and assist them to make the most of their education and life choices.

Group activities involve:

- team games or sports activities to build positive relationships
- workshops to explore the things that are important for healthy relationships with others
- time management
- stress management
- substance use
- careers exploration
- can link students with tutors where required

## DEVELOPMENTS

---

Shalom Christian College has been working hard to garner funding for the development of the Crystal Creek Campus and renovations of the existing boarding facilities.

In Term 2 and 3 of 2009 Shalom renovated the Boys Dormitory, Girls Dormitory and Crystal Creek Campus. Due to the massive scale of renovations there is a need for Shalom to hire alternative accommodation for 30 students at any one time.

Shalom has sourced accommodation in the local area, utilizing the facilities of the nearby Pandanus Community recreational facility. This facility has a range of recreational activities including a swimming pool and mini Golf course. Students will be transported each day to and from Shalom for school, and many of the students staying on campus will be utilizing the facility for activities throughout the term.

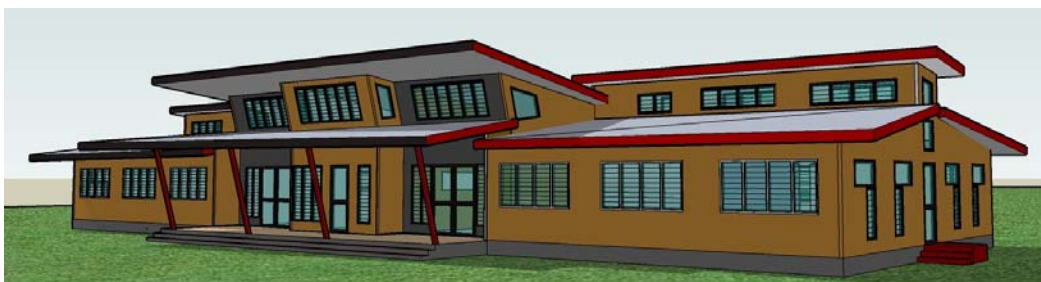
The boys dormitory will be renovated a wing at a time, rotating through the 3 wings until all is finalized. Each of the existing wings will become self contained units; with their own common room and facilities. It will be the male students who will be requiring alternative accommodation whilst their wing is being renovated.

The old girls dormitory was also scheduled for renovation with works commencing on the top floor in Term 2, and then rotating over to the lower for Term 3. All the new facilities will be fully air-conditioned. Female students will not be required to stay off campus, but instead will rotate between the first and second floors of the Old Girls Dorm, until completion of the renovations.



Artists Impression of Dormitories at Crystal Creek

Crystal Creek Developments commenced in 2009, where the building of the new dormitories, dining and kitchen facilities, abolition facilities and health and well being center began around the existing buildings. Shalom proposes the development of 2 new boarding facilities with both consisting of 2 wings each with the capacity for 12 students in either wing, increasing the overall capacity of the campus to 48.



The health and well being facility will allow for the campus to be staffed with a health professional at all times and also have fully equipped treatment rooms and sick bay.

The new kitchen and dining facilities will include hot service baine-maries and will be fully air-conditioned.

The new abolition facilities have to meet rigorous environmental standards due to the closeness of the college to National Park land, and will include separate toileting and showering facilities for both males and females.

Shalom has endeavored to find the most convenient and comfortable accommodation possible for the students whilst in transition and would like to assure parents that the safety and comfort of the students will not be compromised. Should parents have any concerns please don't hesitate to contact the school for further information.

## **EXTRA-CURRICULAR ACTIVITIES**

---

There is a broad range of extra-curricular activities offered to students at Shalom Christian College. Borders and day students have the opportunity to participate in a range of sporting activities during school with full transport provided, these include; NRL, AFL, Soccer, Touch, Basketball and more. Borders also have a range of activities organized for them to participate in after school and on weekends, activities include;

- Sports training and fitness activities
- Music practice
- Traditional dance practice
- Arts and crafts activities
- Camping trips
- Fishing trips
- Paintball
- Shopping
- Local Disco's
- Roller skating
- Ice skating
- Religious services
- Excursions to various local attractions including;
  - The Strand
  - Palaranda
  - The Riverway
  - Dairy Farmers Stadium (during the NRL season)

## **SOCIAL CLIMATE**

---

### **Strengthening student Health and Wellbeing**

Shalom Christian College has a dedicated Health & Wellbeing Centre to provide students with access to support staff which will assist them to make the most of their time at Shalom.

Health & Wellbeing Student Support Staff include:

- Assistant Principal – Pastoral Care,
- School Community Liaison Officers,
- Psychologist/Counsellors,
- Nurse: Contract arrangement,
- Youth Support Co-ordinator: Lauren Mcleod,

In terms of staff, the Student support teams usually consist of Health & Wellbeing staff, class teachers, and outside agency staff where applicable. Parents / carers and the student are an important part of the team and are invited to be involved in planning for the student's needs.

Through the Health & Wellbeing Centre students can also access services of outside agencies including:

- Qld Health Unit
- Specialist services at The Townsville Hospital
- GP visits at Twin City Doctors (Boarding students only)
- Referrals to mental health support services
- Transition Student Support Services Officers
- TADEC – Youth Pathways Program
- World Vision - Global Leadership Program

### **National Safe Schools Framework**

Shalom has implemented the National Safe Schools Framework (NSSF). The Framework is a collaborative effort by the Commonwealth and State and Territory government and non-government school authorities and other key stakeholders. It presents a way of achieving a shared vision of physical and emotional safety and wellbeing for all students in all Australian schools.

The Framework recognises the need for sustained positive approaches that include an appreciation of the ways in which social attitudes and values impact on the behaviour of students in our school communities. Such approaches encourage all members of the school community to:

- value diversity
- contribute positively to the safety and wellbeing of themselves and others
- act independently, justly, cooperatively and responsibly in school, work, civic and family relationships
- contribute to the implementation of appropriate strategies that create and maintain a safe and supportive learning environment.

The aim of the Framework is to assist all members of the College community in building a safe and supportive school where:

- Bullying, harassment and violence are minimized
- Students learn a range of skills and behaviours that will equip them to manage effectively if confronted by situations where bullying, harassment or violence may occur.

### **ISQ Regional and Remote Drug Education Project**

The College received funding through ISQ to develop a program targeting drug and substance use. This focused on developing a resource for use in brief intervention with students, developing physical skills, learning about the dangers of substance use, and strengthening cultural and personal identity.

As part of one of the strategy students at the College have been involved in developing a smoking resource. Workshops were presented by staff from the Alcohol, Tobacco and Other Drugs Service (ATODS) located in Gregory St, North Ward.

During the workshops students helped to create a resource that can be used as a tool for brief intervention or education about smoking.

The workshop used artwork created by the Year 11/12 art class of 2006. Students wrote text based on factual information to accompany the artwork

### **PARENTAL INVOLVEMENT**

---

Shalom Christian College operates the Parenting and Schools Partnership Initiative for which the school received a three year grant to facilitate the engagement of parents from remote communities in their children's education. Shalom Christian College PSPI committee was named in Djamakulil Parents and Friends Association in 2006.

The committee concept has received strong positive feedback from parents regarding the increased involvement they now have in their children's education. Many are proud and happy to come together to have an opportunity to comment on the development of the school or issues they feel are affecting their children in an open forum once a term. Parents are encouraged to become involved and the school endeavors to garner representatives from each community.

The PSPI committee met several times during the year, the most significant of these meetings was the PSPI conference held in the week preceding Shalom's Annual NAIDOC festival, parents had an opportunity to work closely with students, developing performances preparing costumes and sharing their culture.

In 2008 the PSPI committee worked closely with students and parents, whilst in their communities to facilitate not only their own but their entire community's education engagement. Arranging transport to and from the airport, organizing school equipment, as well as providing temporary accommodation and food. With representative in most of our major communities this program has been working well at increasing the success of charters bringing students to school and largely reduced students discomfort and anxiety with traveling away for education.

Each year Shalom also conduct a number of community visits, where various staff visit the communities. This exercise not only allows parents easier access to Shalom, with staff endeavoring to visit all families in each community, but is also a valuable PD exercise. Serving to increase staff awareness of the community life and culture, and allowing them to foster stronger working relationships with students and their families

### **KEEPING FAMILIES INFORMED**

---

Shalom Christian College has a range of information available to parents, students and prospective families. Shalom utilizes newsletters to keep the school and its friends abreast of developments and achievements, publishing a fortnightly School Newsletter and quarterly Shalom News, which is sent out to all families and associates, please call the school to be added to our mailing list.

Shalom also has information available in the form of the schools Prospectus which is regularly updated and gives a full picture of what Shalom Christian College has to offer. In addition Shalom Christian College also has a new web address, [www.ccdeu.org.au](http://www.ccdeu.org.au) which also delivers information on the college and its offerings.